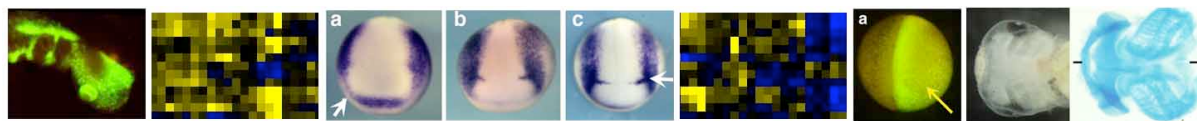


## Postdoctoral positions available in Neural Crest development



An 18-month postdoctoral position (with no nationality restriction) and a 12-month postdoctoral position (for a non-french scientist only) are available in Anne-Hélène Monsoro-Burq laboratory at Institut Curie, near Paris, France.

The successful applicants will join in a small team (CNRS young investigator program), at the Curie Institute, in the south of Paris. Curie Institute is a world-renowned cancer research center associated to a hospital specialized in fighting cancer. Our research department focuses on many aspects of signaling during oncogenesis and development.

The selected applicants will investigate the **molecular and cellular mechanisms of neural crest induction**, focusing on the transcriptional network that controls key steps of neural crest formation. Experimental models are xenopus and chick embryos and cell lines in culture. Approaches include experimental embryology, micromanipulation, cell culture, molecular biology, biochemistry and bioinformatics.

New and ongoing areas of research interests include:

- Identification of the function of novel regulators of neural crest induction
- Analysis of cooperations between neural crest regulators
- Analysis of intracellular pathways involved in neural crest early development
- Large scale analysis of neural crest regulatory network

See examples in

Monsoro-Burq A-H, Fletcher R. and Harland R. (2003): « Neural crest induction by paraxial mesoderm requires FGF but not Wnt signaling in *Xenopus* embryos. » *Development*, 130, 3111-3124.

Monsoro-Burq A-H, Wang E. and Harland R. (2005) "*Msx1* and *Pax3* cooperate to mediate FGF8 and WNT signals during *Xenopus* neural crest induction." *Developmental Cell*, 8, 167-178.

This position requires a Ph. D. in development, cell biology or molecular biology. Ph. D. must have been defended less than five years ago. Strong motivation and solid background in the approaches described above will be preferred.

The position will remain open to applications until filled or until the end of February 2008.

To apply, send a detailed curriculum vitae, statement of research interests and the names and contact information for two past advisors or mentors to:

e-mail : [anne-helene.monsoro-burq@curie.fr](mailto:anne-helene.monsoro-burq@curie.fr)

Dr Anne-Hélène Monsoro-Burq, Ph. D.  
Group Leader  
Team / Equipe ATIP CNRS  
" Molecular Signaling and Neural Crest Development"  
UMR 146  
Institut Curie, Section Recherche  
Centre Universitaire, Batiment 110  
F-91405 Orsay Cedex,  
France

