



CNRS UPMC INSU

Station Biologique  
Roscoff



## 6th MGE SUMMER COURSE ON Marine Evolutionary & Ecological Genomics

Station Biologique de Roscoff, France  
May 25th – June 5th, 2010

### Teachers

Sandie Baldauf, U. Uppsala, SE  
Jonas Collén, U Paris 6, FR  
Simon Creer, U Bangor, UK  
Yves Desdevises, CNRS Banyuls, FR  
Michael Hansen, U Aarhus, DK  
Galice Hoarau, U Bodo, NO  
Jeanine Olsen, Univ Groningen, NL  
Frédéric Partensky, SB-Roscoff, FR  
Heroen Verbruggen, U Gent, BE  
Frédérique Viard, SB-Roscoff, FR  
Filip Volckaert, KULeuven, BE  
Mathias Wegner, ETH Zurich, SW

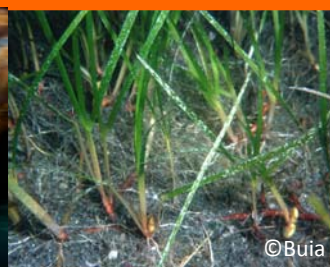


### Organizing committee

Jonas Collen, SB-Roscoff, FR  
Jeanine Olsen, Univ of Groningen, NL  
Claudie Perron, Sb-Roscoff, FR  
Frédérique Viard, SB-Roscoff, FR  
Filip Volckaert, KULeuven, BE

### Topics

Marine aspects of phylogenetics, phylogeography & population genetics;  
comparative, environmental & functional genomics



More info: [www.marine-genomics-europe.org](http://www.marine-genomics-europe.org)

Contact person: Jonas Collen, [collen@sb-roscoff.fr](mailto:collen@sb-roscoff.fr)

Deadline for application: march 26th, 2010