

4th MGE Summer course on
**MARINE EVOLUTIONARY
& ECOLOGICAL GENOMICS**

Station Biologique de Roscoff, France
June 16th-27th, 2008

Teachers

Sandie Baldauf, Univ of York, UK
Eric Bonnivard, Institut Jacques Monod, FR
Douglas L. Crawford, Univ of Miami, USA
Galice Hoarau, Univ of Groningen, NL
Michael M. Hansen, Danish Institute for
Fisheries Research, DK
Wiebe Kooistra, SZ-Naples, IT
Marjorie Oleksiak, Univ of Miami, USA
Jeanine Olsen, Univ of Groningen, NL
Frederique Partensky, SB-Roscoff, FR
Arnaud Tanguy, SB-Roscoff, FR
Klaus Valentin, AWI-Bremerhaven, DE
Anti Vasemägi, Univ of Turku, FI
Frédérique Viard, SB-Roscoff, FR
Filip Volckaert, KULeuven, BE

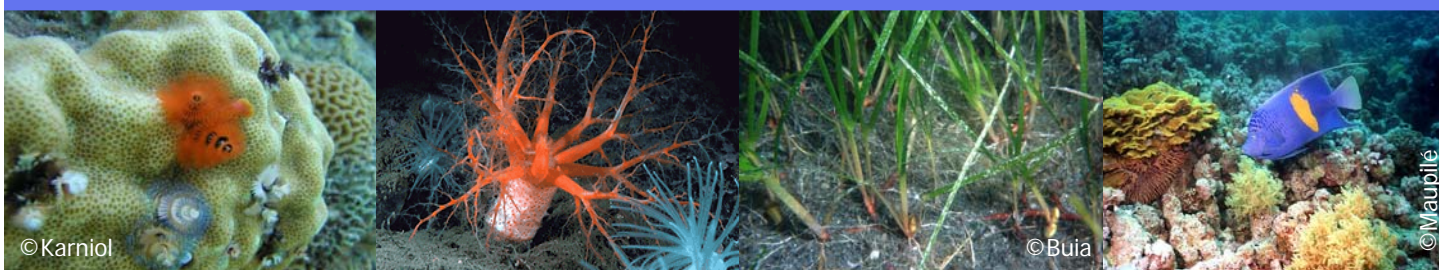


Organizing committee

Ulrika Hjelm, KMRS, SE
Hélène Huelvan, SB-Roscoff, FR
Jeanine Olsen, Univ of Groningen, NL
Arnaud Tanguy, SB-Roscoff, FR
Frédérique Viard, SB-Roscoff, FR
Filip Volckaert, KULeuven, BE

Topics

Marine aspects of phylogenetics, phylogeography & population genetics;
comparative, environmental & functional genomics



More info: www.marine-genomics-europe.org

Contact person: ulrika.hjelm@loven.gu.se

Deadline for application: April 14th, 2008