



CNRS UPMC INSU

Station Biologique
Roscoff



5th MGE SUMMER COURSE ON

Marine Evolutionary & Ecological Genomics

Station Biologique de Roscoff, France

May 25th – June 5th, 2009

Teachers

Sandie Baldauf, Univ. York, UK
Eric Bonnivard, Institut Jacques Monod, FR
Chris Bowler, ENS, Paris, FR
Simon Creer, Univ. Bangor, UK
Galice Hoarau, Univ. Groningen, NL
Wiebe Kooistra, SZ-Naples, IT
Frederique Partensky, SB-Roscoff, FR
Arnaud Tanguy, SB-Roscoff, FR
Klaus Valentin, AWI-Bremerhaven, DE
Frédérique Viard, SB-Roscoff, FR
Clémentine Vitte, Univ. Paris 6, FR
Filip Volckaert, KULeuven, BE
Mathias Wegner, ETH Zurich, CH

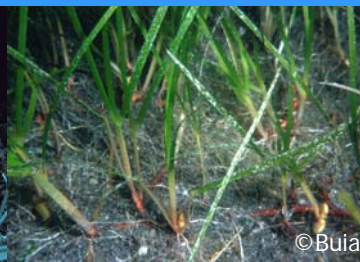


Organizing committee

Hélène Huelvan, SB-Roscoff, FR
Jeanine Olsen, Univ. Groningen, NL
Anne Saisi, SB-Roscoff, FR
Arnaud Tanguy, SB-Roscoff, FR
Frédérique Viard, SB-Roscoff, FR
Filip Volckaert, KULeuven, BE

Topics

Marine aspects of phylogenetics, phylogeography & population genetics;
comparative, environmental & functional genomics



©Maupitié

More info: www.marine-genomics-europe.org
Contact person: Anne Saisi, saisi@sb-roscoff.fr
Deadline for application: April 10th, 2009